

Estates Supplies

Quick Delivery



Best For Infection
Control

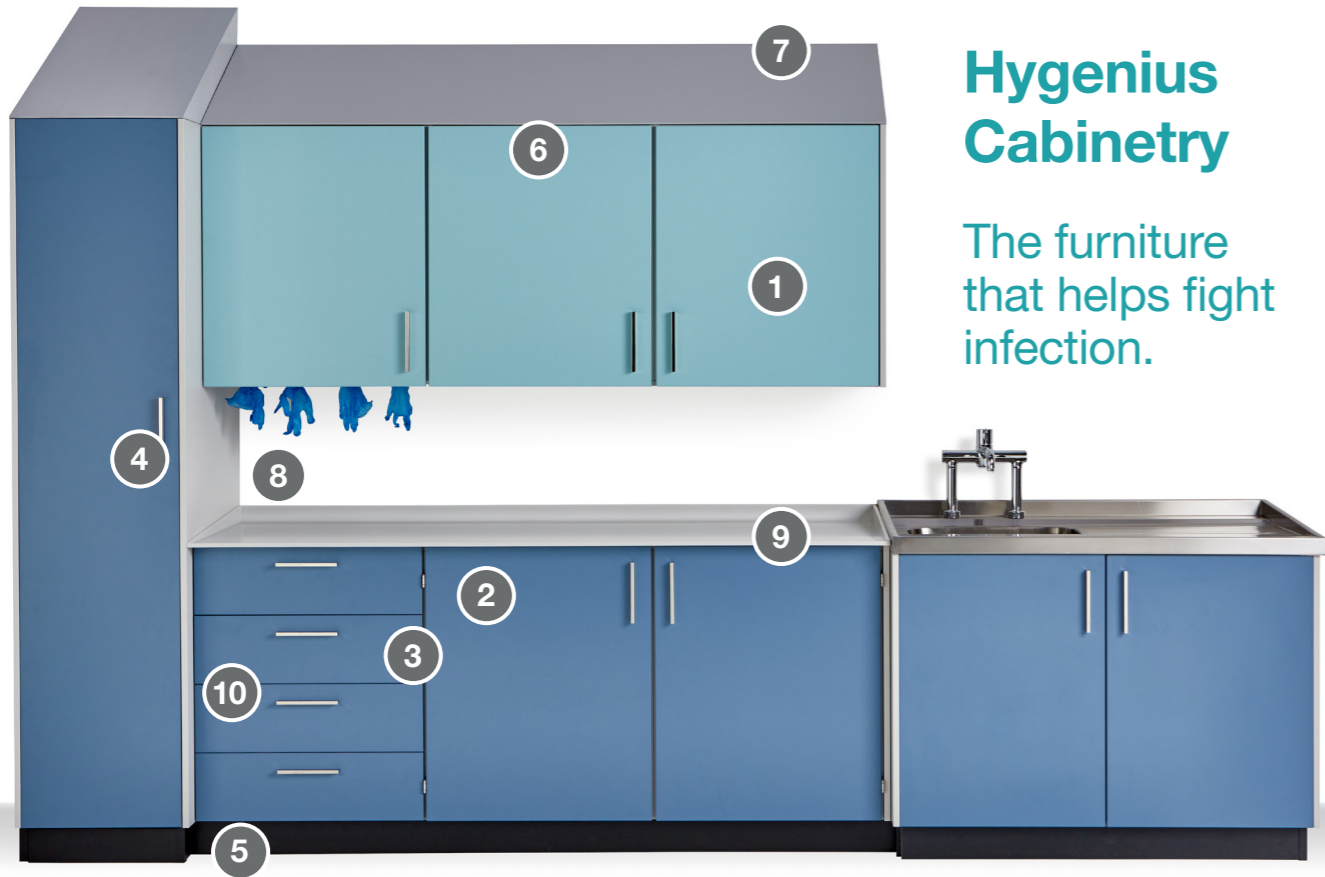


Built To Last



Safer Places
Safer People

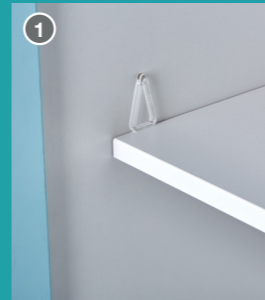
NHS
Supply Chain



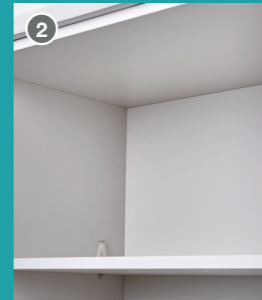
Hygenius Cabinetry

The furniture
that helps fight
infection.

Unrivalled for long life, ease of installation and infection control



Anti-tip shelves



Solid top - no void opening



Easy-clean enclosed
drawer runners



Easy-wipe handles



Water resistant plinths



Easy-clean, heavy-duty
hinges



Ceiling infill panels stop
unhygienic storage'



Seamless rear upstand



Worktop lip prevents
spills



Impact resistant ABS
edging

Standard Sized Cabinetry

Drawer units with/without filing drawer



Code	Description	Width (mm)	Height (mm)	Depth (mm)
HG-WBD053	Working height base unit, 1 shallow + 2 deep drawers	500	760	560
HG-WBD063	Working height base unit, 1 shallow + 2 deep drawers	600	760	560
HG-WBD054	Working height base unit, 4 equal drawers	500	760	560
HG-WBD064	Working height base unit, 4 equal drawers	600	760	560

Base units



Code	Description	Width (mm)	Height (mm)	Depth (mm)
HG-WBF05	Working height base unit, 1 full height door, 1 adj. shelf	500	760	560
HG-WBF06	Working height base unit, 1 full height door, 1 adj. shelf	600	760	560
HG-WBF10	Working height base unit, 2 full ht. doors, 1 adj. shelf	1000	760	560
HG-WBF12	Working height base unit, 2 full ht. doors, 1 adj. shelf	1200	760	560

Standard Sized Cabinetry

Sink Base Units



Code	Description	Width (mm)	Height (mm)	Depth (mm)
HG-WSF05	Working height sink base unit, 1 nr shelf, 1 full height door	500	760	560
HG-WSF06	Working height sink base unit, 1 nr shelf, 1 full height door	600	760	560
HG-WSF10	Working height sink base unit, 1 nr shelf, 2 full height doors	1000	760	560
HG-WSF12	Working height sink base unit, 1 nr shelf, 2 full height doors	1200	760	560

Wall units

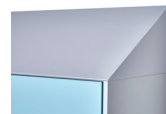


Code	Description	Width (mm)	Height (mm)	Depth (mm)
HG-MWF05	Medium height wall unit, 1 door, 2 adj. shelves	500	760	350
HG-MWF06	Medium height wall unit, 1 door, 2 adj. shelves	600	760	350
HG-MWF10	Medium height wall unit, 2 doors, 2 adj. shelves	1000	760	350
HG-SWF05	Standard height wall unit, 1 door, 1 adj. shelf	500	600	350
HG-SWF06	Standard height wall unit, 1 door, 1 adj. shelf	600	600	350
HG-AWF10	Standard height wall unit, 2 doors, 1 adj. shelf	1000	600	350

Panels for Standard Sized Cabinetry

Sloping tops for wall units

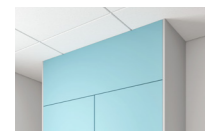
Easy to fit sloping top kit to prevent germ harbouring items being placed on top of cupboards.



Code	Description	Depth (mm)	Height (mm)	Width (mm)
HG-SIP370	Sloping infill panel - Wall unit c/w 3 nr triangle supports per metre and 200mm horizontal infill plate (includes scribe to back wall)	370	370	Variable

Infill panels to ceiling

The ultimate solution to eliminate difficult to clean high level voids.



Code	Description	Depth (mm)	Height (mm)	Width (mm)
HG-CIP26	Ceiling infill panel to suit 2.6m ceiling	350	650	18
HG-CIP28	Ceiling infill panel to suit 2.8m ceiling	350	850	18
HG-CIP30	Ceiling infill panel to suit 3.0m ceiling	350	1050	18

Protective end panels and filler panels

Protect cabinets from trolley, bed and other damage with tough ABS edged panels.



Code	Description	Depth (mm)	Height (mm)	Width (mm)
HG-EP370M	End panel for medium height wall unit	370	760	18
HG-EP580BL	End panel base height	580	760	18
HG-EP630BL	End panel base height	630	760	18
HG-EP680B	End panel base height	680	760	18
HG-FP1BL	Filler panel base height	100	760	18
HG-FP1MW	Filler panel medium wall height	100	760	18
HG-H580B	Panel to floor base height	580	860	18
HG-H630B	Panel to floor base height	630	860	18
HG-H680B	Panel to floor base height	680	860	18

Water resistant laminated plinth



Code	Description	Depth (mm)	Height (mm)	Width (mm)
HG-P100	Plinth - Black laminated WBP plywood c/w corner caps	2800	100	18
AC-P150	Plinth - Black laminated WBP plywood c/w corner caps	2800	150	18

HTM71 Cabinetry

Base units with or without tray liners



Code	Description	Width (mm)	Height (mm)	Depth (mm)
HG-BF4PL and HG-BF4PR for right hand version	HTM base unit, 400 facing, 1 full height door, 2 shelves	455	760	650
HG-BF4SL and HG-BF4SR for right hand version	HTM base unit, 400 facing, 1 full height door, support wall	455	760	650
HG-BF6PL and HG-BF6PR for right hand version	HTM base unit, 600 facing, 1 full height door, 2 shelves	655	760	450
HG-BF6SL and HG-BF6SR for right hand version	HTM base unit, 600 facing, 1 full height door, support wall	655	760	450

Tall units with or without tray liners



Code	Description	Width (mm)	Height (mm)	Depth (mm)
HG-TF4PL and HG-TF4PR for right hand version	HTM tall unit, 400 facing, 1 full height door, 5 shelves	455	2000	650
HG-TF4SL and HG-TF4SR for right hand version	HTM tall unit, 400 facing, 1 full height door, support wall	455	2000	650
HG-TF6PL and HG-TF6PR for right hand version	HTM tall unit, 600 facing, 1 full height door, 5 shelves	655	2000	450
HG-TF6SL and HG-TF6SR for right hand version	HTM tall unit, 600 facing, 1 full height door, support wall	655	2000	450

Wall units with or without tray liners



Code	Description	Width (mm)	Height (mm)	Depth (mm)
HG-WF4PL and HG-WF4PR for right hand version	HTM wall unit, 400 facing, 1 full height door, 2 shelves	455	760	350
HG-WF4SL and HG-WF4SR for right hand version	HTM wall unit, 400 facing, 1 full height door, support wall	455	760	350
HG-WF6PL and HG-WF6PR for right hand version	HTM wall unit, 600 facing, 1 full height door, 2 shelves	655	760	450
HG-WF6SL and HG-WF6SR for right hand version	HTM wall unit, 600 facing, 1 full height door, support wall	655	760	450

HTM71 Cabinetry

Open base units with or without tray liners



Code	Description	Width (mm)	Height (mm)	Depth (mm)
HG-B04P	HTM base unit, 400 facing, 2 shelves, open	455	760	650
HG-B04S	HTM base unit, 400 facing, support wall, open	455	760	650
HG-B06P	HTM base unit, 600 facing, 2 shelves, open	655	760	450
HG-B06S	HTM base unit, 600 facing, support wall, open	655	760	450

Open Tall units with or without tray liners



Code	Description	Width (mm)	Height (mm)	Depth (mm)
HG-TO4P	HTM tall unit, 400 facing, 5 shelves, open	455	2000	650
HG-TO4S	HTM tall unit, 400 facing, support wall, open	455	2000	650
HG-TO6P	HTM tall unit, 600 facing, 5 shelves, open	655	2000	450
HG-TO6S	HTM tall unit, 600 facing, support wall, open	655	2000	450

Open Wall units with or without tray liners



Code	Description	Width (mm)	Height (mm)	Depth (mm)
HG-WO4P	HTM wall unit, 400 facing, 2 shelves, open	455	760	350
HG-WO4S	HTM wall unit, 400 facing, support wall, open	455	760	350
HG-WO6P	HTM wall unit, 600 facing, 2 shelves, open	655	760	450
HG-WO6S	HTM wall unit, 600 facing, support wall, open	655	760	450

HTM71 trays, support wall and accessories.

Optimise your work areas with efficient storage solutions. More accessories available on request.

Polycarbonate trays



Label holders available



Description	Height (mm)	Width (mm)	Depth (mm)
100mm clear basket - shallow	400	600	100
200mm clear basket - deep	400	600	200

Polycarbonate trays



Description	Length (mm)	Depth (mm)
Polycarbonate long divider	600	100
Polycarbonate short divider	400	100
Polycarbonate long divider	600	200
Polycarbonate short divider	400	200

Support Wall Liners



Description	Height (mm)
Support wall - base unit 455 facing (650mm deep)	564
Support wall - tall unit 455 facing (650mm deep)	564
Support wall - base unit 655 facing (450mm deep)	364
Support wall - tall unit 655 facing (450mm deep)	364

IPS Ducts



High pressure laminate

Avoid back strain and damaged panels with these easy to use, high quality IPS ducts with hinged doors.

Code	Description
HG-IP-S29/7/2-ASQ	IPS Stack. Hinged top panel, fixed centre panel, removable lower panel, to NHS spec. Square edged HPL panel construction.

Width (mm)	700
Height (mm)	2980
Depth (mm)	300

Solid grade laminate

No more mouldy swollen panels with these totally impervious IPS ducts.



Code	Description	Width (mm)	Height (mm)	Depth (mm)
AC-IP-S29/7/2-CSG	IPS Stack. Hinged top panel, fixed centre panel, removable lower panel, to NHS spec. Solid grade laminate panel set.	700	2980	300

Contour basin

B62106, B62104, B63201 Contour basin, anti-splash, white inc. waste kit, hanging brackets and outlet.



Code	Description
B62106	Contour basin, anti-splash, white inc. waste kit, hanging brackets and outlet
B62104	Contour basin, anti-splash, white inc. waste kit, hanging brackets and outlet
B63201	Contour basin, anti-splash, white inc. waste kit, hanging brackets and outlet

The best in healthcare basins and taps.

Markwik deck mounted mixer tap



Code	Description
A6734AA	Markwik deck mounted lever operated mixer tap

A6682AA wall mounted mixer tap



Code	Description
A6684	Markwik wall mounted lever operated mixer tap

Shelving

Adjustable track shelving

Suitable for non-clinical areas, versatile and straight forward to fit with an antimicrobial finish.



Description	Width (mm)	Depth (mm)
Adjustable shelving track, white	1980	
Adjustable shelving track, white	1000	
270mm Adjustable shelving bracket		270
370mm Adjustable shelving bracket		370
470mm Adjustable shelving bracket		470
250 x 250mm shelf bracket	250	250
350 x 350mm shelf bracket	350	350

Colostomy bag shelves



Code	Description	Width (mm)	Height (mm)
BG-CSH	Colostomy bag shelf - antimicrobial duraplast construction	500	55
BG-CSH/3	Colostomy bag shelf - antimicrobial duraplast construction	300	30

Worksurfaces

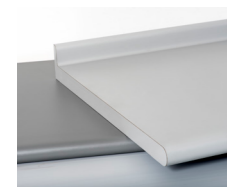
Fight infection with the most hygienic work surface available. Seamless joints, moulded upstand for easy cleaning, and a waterfall lip to prevent fluid leakage. Simply order the size you require, specify finished ends. On arrival, lift on to a bed of silicone for a secure and hygienic fit.

Solid surface



Code	Description	Colours	Length (mm)	Thickness (mm)	Depth (mm)
HG-DTS6	Acrylic Solid Surfacing 12mm worktop, 50mm covered upstand.	White or Grey	3000 or cut to size	12	600
HG-DTS7	Acrylic Solid Surfacing 12mm worktop, 50mm covered upstand.	White or Grey	3000 or cut to size	12	700
HG-DTS9	Acrylic Solid Surfacing 12mm worktop, 50mm covered upstand.	White or Grey	3000 or cut to size	12	750
HG-WT6	Acrylic Solid Surfacing 12mm Worktop, 50mm covered upstand & waterfall edge.	White or Grey	3000 or cut to size	12	600
HG-WT7	Acrylic Solid Surfacing 12mm Worktop, 50mm covered upstand & waterfall edge.	White or Grey	3000 or cut to size	12	700
HG-WT9	Acrylic Solid Surfacing 12mm Worktop, 50mm covered upstand & waterfall edge.	White or Grey	3000 or cut to size	12	750

Laminated with or without upstand



Code	Description	Colours	Length (mm)	Thickness (mm)	Depth (mm)
AC-WTU6	Worktop bullnose. laminate including covered 55mm upstand	White or Grey	3000 or cut to size	38	600
AC-WTU65	Worktop bullnose. laminate including covered 55mm upstand	White or Grey	3000 or cut to size	38	650
AC-WTU7	Worktop bullnose. laminate including covered 55mm upstand	White or Grey	3000 or cut to size	38	700
AC-WTN6	Worktop laminate no upstand	White or Grey	4000 or cut to size	38	600
AC-WTN65	Worktop laminate no upstand	White or Grey	4000 or cut to size	38	670
AC-WTN7	Worktop laminate no upstand	White or Grey	4000 or cut to size	38	700

Drug and medicine storage

- Super secure drug storage units with anti-tamper features constructed in line with Misuse of Drugs (Safe Custody) Regulations 1973 compliant.
- BS2881: 1989 (Security Level One) Specification for Cupboards for the Storage of Medicines in Health Care Premises
- BS3621 anti-pick & drill, key retaining five pin cylinder lock (supplied with 3 keys)
- Compatible with Abloy CLIQ Remote.
- 1.5mm thick mild steel, fully welded construction.
- Full length piano hinge with welded hinge pins.
- Anti-prybar return preventing removal of door even if the hinge is removed.



Description	Width (mm)	Height (mm)	Depth (mm)
Wall mounted controlled drugs cabinet - Right-hand hinged	335	550	270
Wall mounted controlled drugs cabinet - Right-hand hinged	300	335	270
Controlled drugs cabinet - Right-hand hinged	300	250	150
Medicine / drugs cabinet - Right-hand hinged	275	370	245
Controlled drugs cabinet - Right-hand hinged	500	550	300
Sloping top for drugs / medicine cabinet			
9 volt battery powered warning light & audible alarm			



Accessories

Cantilever support legs

Sturdy powder coated cantilever legs for wall benching in desk and working height.



Code	Description	Thickness (mm)	Height (mm)
BG-CL720	Cantilever support leg, powder coated, to suit worktop depth minus 40mm	25	720
BG-CL860	Cantilever support leg, powder coated, to suit worktop depth minus 40mm	25	860

Coat hooks



Code	Description	Length (mm)	Depth (mm)
HG-CH2	Coat hook, hat & coat, aluminium, c/w backplate, 2 no. hooks	200	150
HG-CH4	Coat hook, hat & coat, aluminium, c/w backplate, 4 no. hooks	400	150
HG-CH6	Coat hook, hat & coat, aluminium, c/w backplate, 6 no. hooks	600	150

Chrome support legs

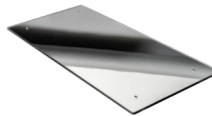
A sleek alternative to cantilever legs for wall benching or additional worktop support,



Code	Description	Diameter (mm)	Height (mm)	Depth (mm)
BG-CH720	Chrome support leg, desk height	Ø60	720	123-358
BG-CH860	Chrome support leg, working height	Ø60	860	123-438

Mirror

Unbreakable, polycarbonate mirror with radiused edge.



Code	Description	Width (mm)	Height (mm)
BG-MP3/65	Mirror, quarter round edges, fixed by 4 nr 6mm Holes at 50mm Centres in each corner and Fixing Adhesive, 6mm Polycarbonate	300	650
BG-MP5/13	Mirror, quarter round edges, fixed by 6 nr 6mm Holes at 50mm Centres in each corner and Fixing Adhesive, 6mm Polycarbonate	500	1300

Other products to order

- Bedside Cabinet
- Mobile Wardrobe
- Cut to size panels
- Wall protection and bump rails
- Doc M kits and grab rails
- Shower accessories
- Storage plinths
- Changing benches
- Lockers
- Nurse bases
- Full range of anti-ligature fixtures



Hygenius[®]

by Workspace Design

**Safer Places
Safer People**



Get in touch

01738 633184

hygenius.healthcare/direct
enquiries@hygenius.healthcare



Visit our showroom

4 Sutton Lane, Farringdon,
London EC1M 5PU

NHS

Supply Chain